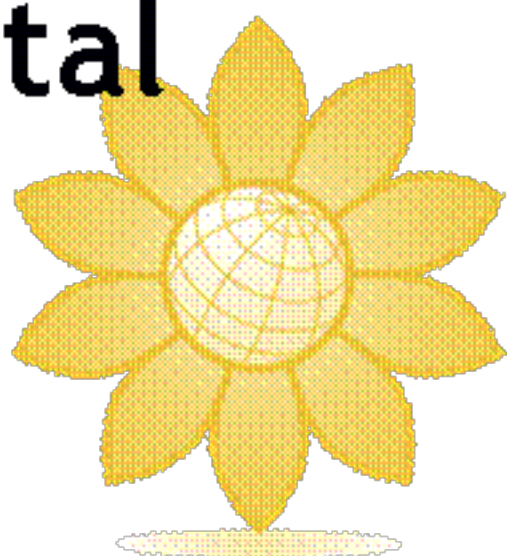


Conservation and Environmental Education Programs



***Updated for
2009-2010***

Programs are available to:

Schools

4-H Groups

Scout Groups

Home School Groups

Teacher In-Service Days

Senior Services

Adult Education

and others....

Call to schedule!

CONTACT:

Danielle Thompson
Education & Wildlife Specialist

706 South Main Street

Georgetown, OH 45121

Phone: (937) 378-4424

Fax: (937) 378-6710

danielle.thompson@oh.nacdn.net

VISIT US: www.brownsxcd.org

Brown Soil and Water Conservation District

WATER & WATER QUALITY

Enviroscares (We now have 2 models to choose from!)

Both of these large hands-on models help students understand our valuable water resources.

Non-Point Source Model - Learn what a watershed is and the purpose it serves in our environment.

Students place pollutants on the landscape and discover how humans contribute to water contamination. Sources of pollution and pollution prevention topics are covered through this activity.

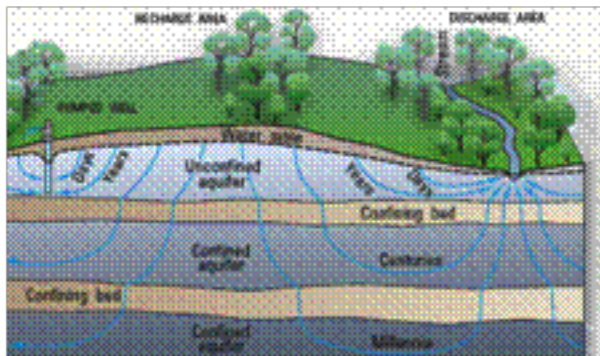


Drinking Water & Wastewater Model - Discover the process water must go through before it comes to your house AND after it leaves it! The model will help students see the work that goes into keeping our water healthy; whether it is in your sink or flowing in a stream.

Sci. Cont. Standards: K-12

Inside or Outside

Groundwater Model



Students will have the opportunity to see what's happening below the grounds' surface with this demonstration. See how water underground flows naturally and also how it is affected by human actions such as pumping or polluting.

Sci. Cont. Standards: 6-12

Inside

Incredible Journey

Through this active simulation students will play the part of a water molecule moving through the water cycle. Students will be able to describe the states of water as it moves through the cycle.



Sci. Cont. Standards: 4, 6, 7

Inside or Outside

Macroinvertebrate Mayhem

This activity leads students through several rounds of macroinvertebrate stream survival. Students will learn the tolerance levels of local macroinvertebrates and how water quality conditions impact the population. They will understand how both the quality and quantity of macroinvertebrates help indicate the health of a stream.

Sci. Cont. Standards: 3-5

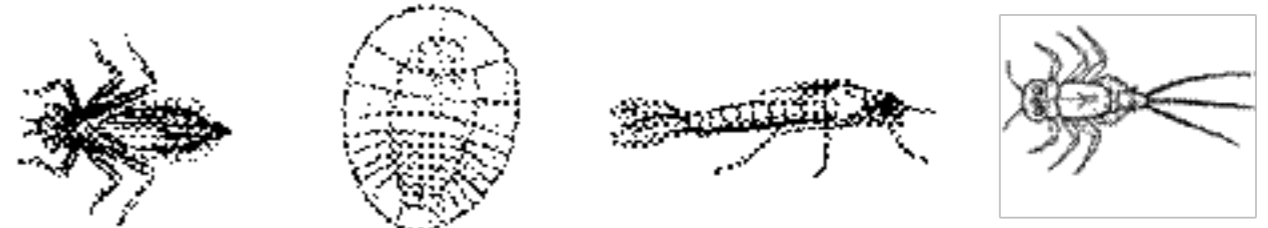
Outside or Gym

Stream Monitoring and AWARE '4' Kids

Get out of the classroom and learn about macroinvertebrates through this hands-on program. At the stream, students will learn about the diversity of macroinvertebrates living in Brown County water and how they relate to water quality. [This program requires stream access. This could be on school grounds or nearby. School is responsible for transportation.]

Sci. Cont. Standards: 1-12

Outside



WATER CONTINUED....

Sum of the Parts



See how decisions by humans affect the water quality for everyone using this interactive program. Students will learn that everyone contributes to the pollution of a watershed, whether it is point source or nonpoint source contamination.

Sci. Cont. Standards: 3, 5-11

Inside

Chemical Water Quality Monitoring

Through this activity, students will collect local water samples for a variety of water quality indicators. Tests include temperature, pH, nitrates, phosphates, alkalinity, and turbidity. [This program can be conducted inside the classroom with water samples from local sources being brought to the students.]

Sci. Cont. Standards: 5-12

Inside or Outside

SOIL, EROSION, & ROCKS

Just Passing Through

This Project WET activity has students simulate the effect vegetation has on water flow and erosion. This program is an energetic and visually engaging activity that leads to good discussion about the forces of water and weathering.

Sci. Cont. Standards: 4, 5

Outside or Gym



Edible Soil Profiles

Students will conduct an investigation of different soil types and record their observations on a chart. After comparing the different types of soils and learning about soil horizons (profiles), the activity will conclude with edible soil profiles.

Sci. Cont. Standards: 3

Inside



Stream Simulator

Show students stream morphology using this hands-on stream table model. With this model we are able to teach concepts such as stream formation, erosion, stream bank stabilization, and waterway management.

Sci. Cont. Standards: 2-12

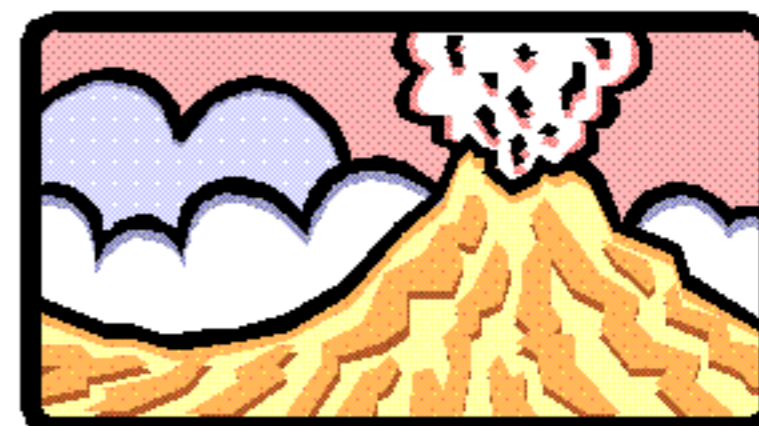
Preferably Outside

The Rock Cycle

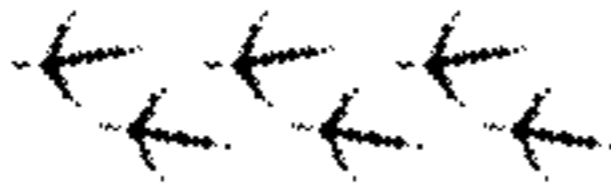
This activity allows students to simulate the many paths minerals may take in the rock cycle. By travelling from one location to another, students will learn about the processes of weathering, erosion, decomposition, melting, sedimentation, and more!

Sci. Cont. Standards: 6

Outside



WILDLIFE



Furs and Skulls

Through the use of furs, tracks, skulls, and other animal signs students will learn the amazing adaptations animals have developed in order to live in their particular niche. Animals native to Brown County and Ohio are the focus of this program.

Sci. Cont. Standards: K-3, 5

Inside or Outside

Ohio Owls

Discover the secret life of Ohio's amazing nocturnal birds in this primary-level program. The focus of this activity will be for students to compare characteristics of real owls to imaginary characteristics given to owls in children's literature.

Sci. Cont. Standards: K

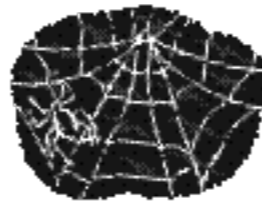
Inside

Food Webs

Food Chains...Food Webs...Pyramid of Energy. This program is a multi-day event that will take students on an increasingly complex journey. Using animals native to Ohio, we will explore predator-prey relationships and the transfer of energy in an ecosystem.

Sci. Cont. Standards: 5

Inside



Bats!

Who cares about flying mice that just get stuck in your hair? Through this presentation students will debunk the myths about these small, unique, and beneficial mammals. We will learn about their amazing anatomy and the role they play in our ecosystem.

Sci. Cont. Standards: K, 1, 3, 4

Inside

Ohio Wildlife History

Combine Social Studies and Natural History in this highly visual learning experience. Students will create a timeline of wildlife history and see how settlers have dramatically changed the Ohio landscape over more than 250 years.

Sci. Cont. Standards: 2, 3, 5, 11

Social Studies Cont. Standards 2-5



Inside

Bird Beak Buffet



Through the use of different 'beaks' students will simulate three different ways in which birds feed. They will chart the amount of food gathered and observe how birds can feed on a variety of foods; including insects, nectar, seeds, fish, and fruit. Students will compare feeding success and survival to these beak adaptations.

Sci. Cont. Standards: K, 1, 3, 5

Inside or Outside

Eagles - Our National Symbol

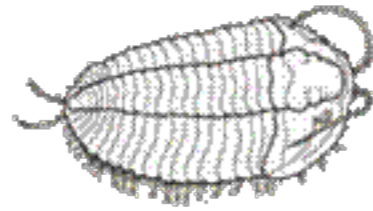
Take an in-depth look at the Bald Eagle through this new presentation offered by the Ohio Division of Wildlife. Learn about the unique life history of our national symbol and the many adaptations it possesses. [Materials for this activity are borrowed...allow us ample time for scheduling.]

Sci. Cont. Standards: 3 & 7

Inside or Outside



MISCELLANEOUS



Fossils are Alive!

Students will find out how the fossils they see in Brown County today were once living creatures in an ancient Ordovician ocean. These preserved organisms are even related to some animals alive today. This program will include visual representations of the live animals and examples of each fossil discussed.

Sci. Cont. Standards: 2-4, 8

Inside

Every Tree for Itself

Food. Space. Water. These needs are common to all living things, trees included. Students will simulate the lives of trees and understand the competition plants have when trying to survive in the forest.

Sci. Cont. Standards: K-2, 4-8

Outside or Gym

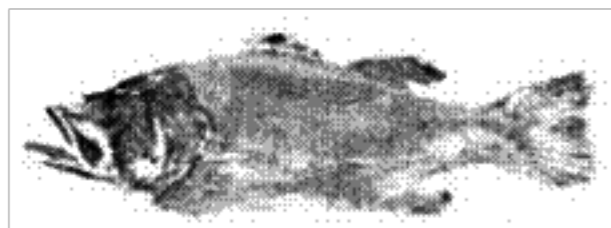
Gyotaku (Fish Printing)

Gyotaku (pronounced "GEE - OH - TAH - KOO") is the art of fish printing which originated in 19th century Japan. Students will learn this practical art that combines both conservation and storytelling in one activity. Each participant will take home an impression of a fish native to Ohio. Fun for all ages!

Sci. Cont. Standards: 1, 5

Inside or Outside

Art Cont. Standards: K-3, 5, 6, 9



Reasons for the Seasons

Understanding the Earth's rotation and revolution patterns can be a difficult concept for anyone to grasp. This demonstration walks students through the incredible processes that result in the changing seasons we observe.



Sci. Cont. Standards: 5, 8

Inside



Ohio Habitats

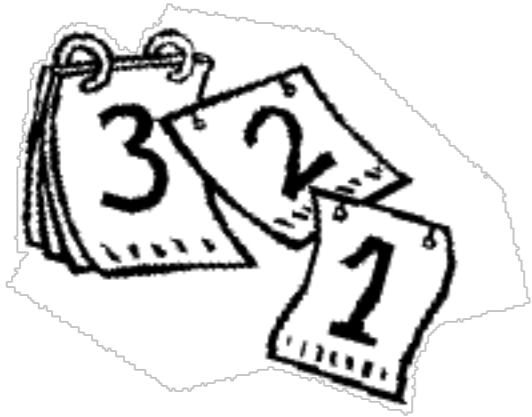
Forests and Meadows and Ponds...these are a few of the many wonderful habitats that can be found in the state of Ohio. During this activity students will be surrounded by a felt board representing these habitats. We will discuss the differences between the areas and students will have the opportunity to place animals in their appropriate habitat.

Sci. Cont. Standards: 2

Inside in a LARGE space

**DIDN'T FIND THE PROGRAM YOU WANTED?
THE BROWN SWCD OFFICE PROVIDES MORE
PROGRAMS THAN CAN BE COMPRESSED INTO
A BROCHURE. IF YOU HAVE AN IDEA FOR A
DIFFERENT PRESENTATION, CONTACT
DANIELLE AT 937-378-4424 ext. 125**

*** SCHEDULING ***



The free programs offered by the Brown SWCD are becoming increasingly popular. This, combined with staffing changes, has placed greater stress on our time.

PLEASE allow ample time when scheduling programs.

The farther ahead, the better!

RESOURCES FOR YOUR CLASSROOM

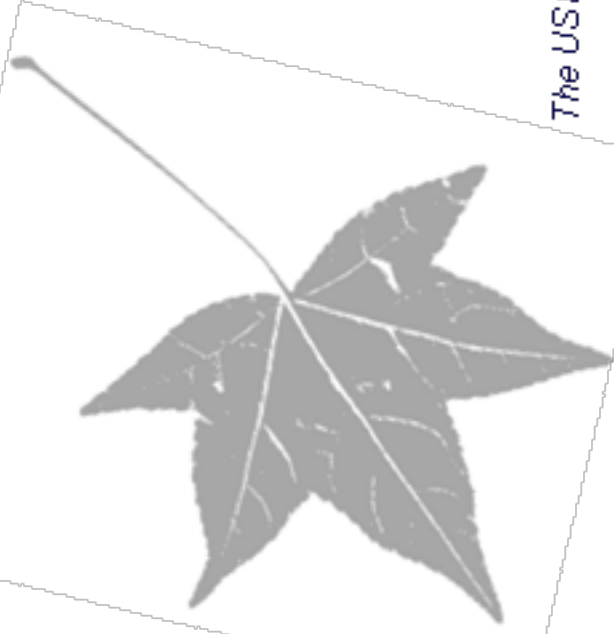
Looking for new environmental materials? You may want to check out the following....

- www.wildohio.com - This Ohio Division of Wildlife website has educator resources and information on upcoming teacher workshops
- www.nostudentleftindoors.com - The No Student Left Indoors project encourages teachers and students to experience nature in their own schoolyard
- www.projectwet.org - The Project WET curricula can be obtained through workshops across the state. Check out the great materials available.
- www.plt.org - Project Learning Tree is a multi-disciplinary program from the American Forest Foundation. You can explore topics beyond the forest including wildlife, water, waste management and energy.
- www.cas.muohio.edu/scienceforohio - The Science for Ohio project is an initiative from Miami University. You will find at least 22 inquiry lessons ready-to-use in your classroom (some used by Brown SWCD!).

All activities in Project WET, Project WILD, Project Learning Tree and Science for Ohio are aligned to Ohio's academic content standards.

Brown Soil and Water Conservation District
706 South Main Street
Georgetown, OH 45121

“Providing leadership in promoting and protecting the integrity of Brown County’s soil, water and other natural resources through technical assistance and education.”



The USDA is an equal opportunity provider and employer.